



4 PORT HOT WATER BUFFER

HWBT Series for Hot Water Systems ASME

125 PSIG Working Pressure

Construction

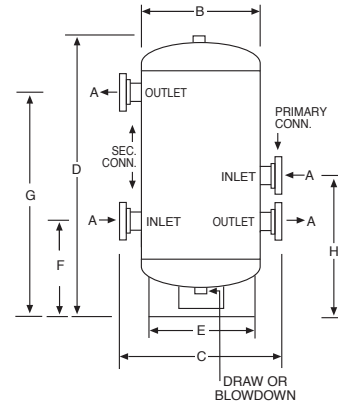
Body	ASME Approved Steel
Flanges	ASME 150 Lb
Paint	Red Oxide Primer
Auxiliary Connection	Top Vent & Bottom Drain Standard

Performance

Maximum Operating Temperature	450° F / 232°C
Maximum Working Pressure	125 psi / 8.8 Bar
Warranty	1 Year

Application

- For use in hydronic systems.
- Designed and constructed per ASME Code Section VIII, Division 1.
- Available with optional seismic restraints.



ASME Models

Model Number	Number of Ports	Volume Gal	Dimensions								Shipping Weight	
			A	B	C	D	E	F	G	H	Lbs	Kg
			Conn. In Pri./Sec.	In	In	In	In	In	In	In		
HWBT120-2/2-125	4	120	2/2	24	33 ³ / ₈	55 ³ / ₄	16	15	45	27	267	121
HWBT120-2/3-125	4	120	2/3	24	33 ³ / ₈	55 ³ / ₄	16	15	45	27	282	128
HWBT120-3/3-125	4	120	3/3	24	33 ³ / ₈	55 ³ / ₄	16	15	45	27	297	135
HWBT120-4/4-125	4	120	4/4	24	33 ³ / ₈	55 ³ / ₄	16	15 ¹ / ₂	44 ¹ / ₂	27 ¹ / ₂	338	153
HWBT120-6/6-125	4	120	6/6	24	33 ³ / ₈	55 ³ / ₄	16	15 ¹ / ₂	44 ¹ / ₂	27 ¹ / ₂	356	161
HWBT200-2/2-125	4	200	2/2	30	39	62 ¹ / ₂	24	21 ¹ / ₂	45 ¹ / ₂	35 ¹ / ₂	489	222
HWBT200-2/3-125	4	200	2/3	30	39	62 ¹ / ₂	24	21 ¹ / ₂	45 ¹ / ₂	35 ¹ / ₂	503	228
HWBT200-3/3-125	4	200	3/3	30	39 ³ / ₈	62 ¹ / ₂	24	21 ¹ / ₂	45 ¹ / ₂	35 ¹ / ₂	518	235
HWBT200-4/4-125	4	200	4/4	30	39 ³ / ₈	62 ¹ / ₂	24	21 ¹ / ₂	45 ¹ / ₂	35 ¹ / ₂	560	254
HWBT300-2/2-125	4	300	2/2	36	45 ³ / ₈	80 ³ / ₈	30	32 ¹ / ₄	61 ¹ / ₄	48 ¹ / ₄	682	309
HWBT300-2/3-125	4	300	2/3	36	45 ³ / ₈	80 ³ / ₈	30	32 ¹ / ₈	61	48 ¹ / ₈	696	316
HWBT300-3/3-125	4	300	3/3	36	45 ³ / ₈	80 ³ / ₈	30	32 ¹ / ₈	61	48 ¹ / ₈	711	323
HWBT300-4/4-125	4	300	4/4	36	45 ³ / ₈	80 ³ / ₈	30	32 ¹ / ₈	61	48 ¹ / ₈	753	342

All dimensions and weights are approximate.

Job Name _____	Notes _____
Engineer _____	_____
Contractor _____	_____
P.O. No. _____	_____
Sales Rep. _____	_____
Model No. _____	_____

