



4 PORT HOT WATER BUFFER

HWBT Series for Hot Water Systems ASME

150 PSIG Working Pressure

Construction

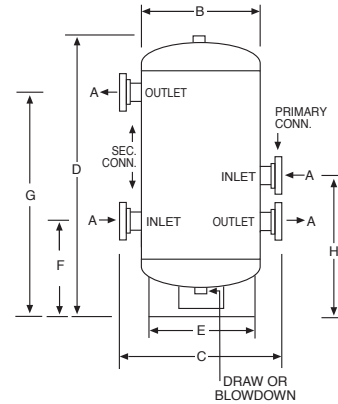
Body	ASME Approved Steel
Flanges	ASME 150 Lb
Paint	Red Oxide Primer
Auxiliary Connection	Top Vent & Bottom Drain Standard

Performance

Maximum Operating Temperature	450° F / 232°C
Maximum Working Pressure	150 psi / 10.5 Bar
Warranty	1 Year

Application

- For use in hydronic systems.
- Designed and constructed per ASME Code Section VIII, Division 1.
- Available with optional seismic restraints.



ASME Models

Model Number	Number of Ports	Volume Gal	Dimensions								Shipping Weight	
			A	B	C	D	E	F	G	H	Lbs	Kg
			Conn. In Pri./Sec.	In	In	In	In	In	In	In		
HWBT120-2/2-150	4	120	2/2	24	33 ¹ / ₈	55 ³ / ₄	16	15	45	27	294	133
HWBT120-2/3-150	4	120	2/3	24	33 ¹ / ₈	55 ³ / ₄	16	15	45	27	310	141
HWBT120-3/3-150	4	120	3/3	24	33 ¹ / ₈	55 ³ / ₄	16	15	45	27	327	148
HWBT120-4/4-150	4	120	4/4	24	33 ¹ / ₈	55 ³ / ₄	16	15 ¹ / ₂	44 ¹ / ₂	27 ¹ / ₂	372	169
HWBT120-6/6-150	4	120	6/6	24	33 ¹ / ₈	55 ³ / ₄	16	15 ¹ / ₂	44 ¹ / ₂	27 ¹ / ₂	392	178
HWBT200-2/2-150	4	200	2/2	30	39	62 ¹ / ₂	24	21 ¹ / ₂	45 ¹ / ₂	35 ¹ / ₂	538	244
HWBT200-2/3-150	4	200	2/3	30	39	62 ¹ / ₂	24	21 ¹ / ₂	45 ¹ / ₂	35 ¹ / ₂	553	251
HWBT200-3/3-150	4	200	3/3	30	39 ¹ / ₈	62 ¹ / ₂	24	21 ¹ / ₂	45 ¹ / ₂	35 ¹ / ₂	570	259
HWBT200-4/4-150	4	200	4/4	30	39 ¹ / ₈	62 ¹ / ₂	24	21 ¹ / ₂	45 ¹ / ₂	35 ¹ / ₂	617	280
HWBT300-2/2-150	4	300	2/2	36	45 ¹ / ₈	80 ³ / ₈	30	32 ¹ / ₄	61 ¹ / ₄	48 ³ / ₄	750	340
HWBT300-2/3-150	4	300	2/3	36	45 ¹ / ₈	80 ³ / ₈	30	32 ¹ / ₈	61	48 ³ / ₈	766	347
HWBT300-3/3-150	4	300	3/3	36	45 ¹ / ₈	80 ³ / ₈	30	32 ¹ / ₈	61	48 ³ / ₈	782	355
HWBT300-4/4-150	4	300	4/4	36	45 ¹ / ₈	80 ³ / ₈	30	32 ¹ / ₈	61	48 ³ / ₈	828	376

All dimensions and weights are approximate.

Job Name _____	Notes _____
Engineer _____	_____
Contractor _____	_____
P.O. No. _____	_____
Sales Rep. _____	_____
Model No. _____	_____

