



# EXTROL®

Hydronic Expansion Tanks: Horizontal AX Series ASME

## 300 PSIG Working Pressure

### Construction

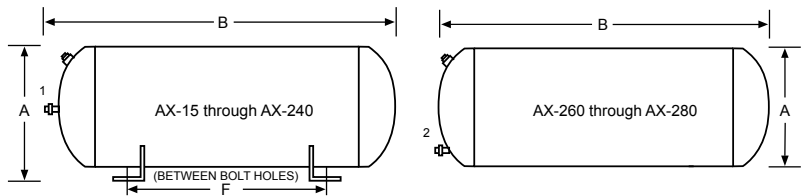
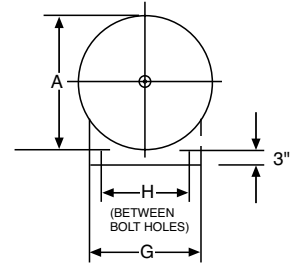
Shell	ASME Approved Steel
Diaphragm	Heavy Duty Butyl/EPDM
System Connection	NPTF <sup>1</sup> Malleable Iron Center NPTM <sup>2</sup> Steel Pipe, Top Offset
Finish	Red Oxide Primer
Air Valve	Schrader Valve w/EPDM Seats
Factory Precharge	12 PSIG (.8 bar)

### Performance

Maximum Operating Temperature	240°F (115°C)
Maximum Working Pressure	300 PSIG (12 bar)
Warranty	1-Year

### Application

- For use in closed, non-potable hydronic heating and chilled water systems.
- Designed to meet all ASME Code Section VIII, Division 1 standards.
- Available with optional sight glass and seismic restraints (saddles).
- Suitable in propylene glycol applications with mixtures up to 50%.



### Horizontal ASME Models

Model Number	Tank Volume		Max. Accept. Volume		A Tank Diameter		B Tank Length		Sys. Conn	Restraints (Saddles) for Horizontal Mounting						Ship Wt. with Restraints (Saddles)		Shipping Weight	
										F		G		H					
	Gal	Lit	Gal	Lit	In	mm	In	mm		In	mm	In	mm	In	mm	Lbs	Kg	Lbs	Kg
AX-15	8.0	30.3	2.4	9.1	12	305	19	489	½ <sup>1</sup>	14¾	365	10	254	8	203	65	29	59	27
AX-20	10.9	41.3	2.4	9.1	12	305	26	607	½ <sup>1</sup>	21⅞	537	10	254	8	203	80	36	74	34
AX-40	21.7	82.2	11.3	42.8	16	356	29	737	½ <sup>1</sup>	22	557	14	356	12	305	134	61	118	54
AX-60	33.6	127.2	11.3	42.8	16	356	43	1073	½ <sup>1</sup>	36⅞	918	14	356	12	305	170	77	154	70
AX-80	44.4	168.1	22.6	85.5	24	610	29	725	1 <sup>1</sup>	16⅞	429	20	508	18	457	265	120	245	111
AX-100	55.7	211.8	22.6	85.5	24	610	33	840	1 <sup>1</sup>	21½	546	20	508	18	457	299	136	279	127
AX-120	68.0	257.4	34.0	128.7	24	610	41	1051	1 <sup>1</sup>	29½	749	20	508	18	457	347	157	327	148
AX-144	77.0	291.5	34.0	128.7	24	610	46	1170	1 <sup>1</sup>	34¾	873	20	508	18	457	370	168	350	159
AX-180	90.0	340.7	34.0	128.7	24	610	54	1357	1 <sup>1</sup>	41¼	1060	20	508	18	457	392	178	372	169
AX-200	110.0	416.4	34.0	128.7	24	610	64	1624	1 <sup>1</sup>	52¼	1327	20	508	18	457	450	204	430	195
AX-240	132.0	500.0	46.0	174.0	30	762	51	1295	1 <sup>1</sup>	35	889	24	610	22	559	667	303	642	291
AX-260	159.0	600.0	56.0	212.0	30	762	62	1581	1¼ <sup>2</sup>	44¼	1124	24	610	22	559	753	342	728	330
AX-280	211.0	800.0	84.0	318.0	30	762	80	2032	1¼ <sup>2</sup>	62	1575	24	610	22	559	755	433	930	422

All dimensions and weights are approximate.

Job Name _____	Notes _____
Engineer _____	_____
Contractor _____	_____
P.O. No. _____	_____
Sales Rep. _____	_____
Model No. _____	_____

