



### 250 PSIG Working Pressure

#### Construction

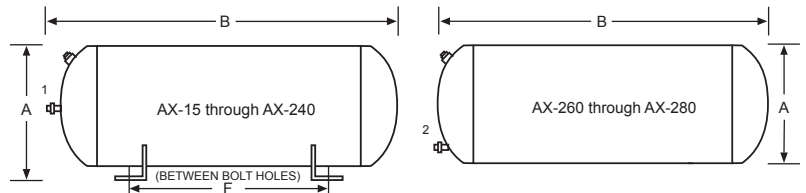
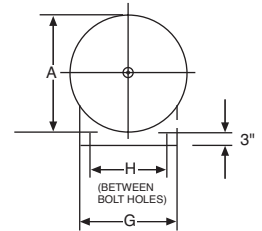
Shell	ASME Approved Steel
Diaphragm	Heavy Duty Butyl/EPDM
System Connection	NPTF <sup>1</sup> Malleable Iron Center NPTM <sup>2</sup> Steel Pipe, Top Offset
Finish	Red Oxide Primer
Air Valve	Schrader Valve w/EPDM Seats
Factory Precharge	12 PSIG (.8 bar)

#### Performance

Maximum Operating Temperature	240°F (115°C)
Maximum Working Pressure	250 PSIG (20.7 bar)
Warranty	1-Year

#### Application

- For use in closed, non-potable hydronic heating and chilled water systems.
- Designed to meet all ASME Code Section VIII, Division 1 standards.
- Available with optional sight glass and seismic restraints (saddles).
- Suitable in propylene glycol applications with mixtures up to 50%.



#### Horizontal ASME Models

Model Number	Tank Volume		Max. Accept. Volume		A Tank Diameter		B Tank Length		Sys. Conn	Restraints (Saddles) for Horizontal Mounting						Ship Wt. with Restraints (Saddles)		Shipping Weight	
										F		G		H					
	Gal	Lit	Gal	Lit	In	mm	In	mm		In	mm	In	mm	In	mm	Lbs	Kg	Lbs	Kg
AX-15	8.0	30.3	2.4	9.1	12	305	19	489	1/2 <sup>1</sup>	14 3/8	365	10	254	8	203	61	28	55	25
AX-20	10.9	41.3	2.4	9.1	12	305	26	607	1/2 <sup>1</sup>	21 1/8	537	10	254	8	203	75	34	69	31
AX-40	21.7	82.2	11.3	42.8	16	356	29	737	1/2 <sup>1</sup>	22	557	14	356	12	305	127	58	111	50
AX-60	33.6	127.2	11.3	42.8	16	356	43	1073	1/2 <sup>1</sup>	36 3/8	918	14	356	12	305	160	73	144	65
AX-80	44.4	168.1	22.6	85.5	24	610	29	725	1 <sup>1</sup>	16 3/8	429	20	508	18	457	250	113	230	104
AX-100	55.7	211.8	22.6	85.5	24	610	33	840	1 <sup>1</sup>	21 1/2	546	20	508	18	457	281	127	261	118
AX-120	68.0	257.4	34.0	128.7	24	610	41	1051	1 <sup>1</sup>	29 1/2	749	20	508	18	457	326	148	306	139
AX-144	77.0	291.5	34.0	128.7	24	610	46	1170	1 <sup>1</sup>	34 3/8	873	20	508	18	457	347	157	327	148
AX-180	90.0	340.7	34.0	128.7	24	610	54	1357	1 <sup>1</sup>	41 3/4	1060	20	508	18	457	368	167	348	159
AX-200	110.0	416.4	34.0	128.7	24	610	64	1624	1 <sup>1</sup>	52 1/4	1327	20	508	18	457	424	192	404	183
AX-240	132.0	500.0	46.0	174.0	30	762	51	1295	1 <sup>1</sup>	35	889	24	610	22	559	627	284	602	273
AX-260	159.0	600.0	56.0	212.0	30	762	62	1581	1 1/4 <sup>2</sup>	44 1/4	1124	24	610	22	559	708	321	683	310
AX-280	211.0	800.0	84.0	318.0	30	762	80	2032	1 1/4 <sup>2</sup>	62	1575	24	610	22	559	895	406	870	395

All dimensions and weights are approximate.

Job Name _____	Notes _____
Engineer _____	_____
Contractor _____	_____
P.O. No. _____	_____
Sales Rep. _____	_____
Model No. _____	_____

