



# EXTROL®

Hydronic Expansion Tanks: Horizontal AX Series ASME

## 300 PSIG Working Pressure

### Construction

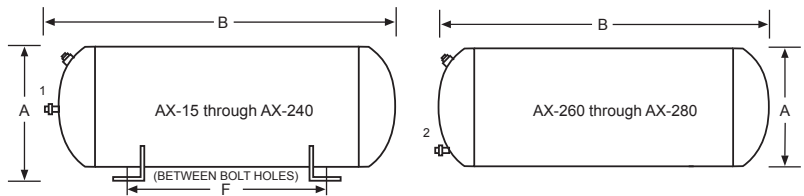
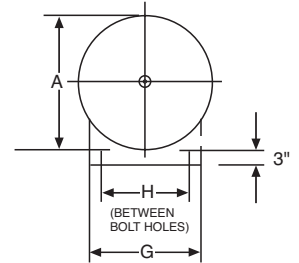
|                   |   |
|-------------------|---|
| Shell             | ASME Approved Steel   |
| Diaphragm         | Heavy Duty Butyl/EPDM   |
| System Connection | NPTF <sup>1</sup> Malleable Iron Center<br>NPTM <sup>2</sup> Steel Pipe, Top Offset |
| Finish            | Red Oxide Primer  |
| Air Valve         | Schrader Valve w/EPDM Seats   |
| Factory Precharge | 12 PSIG (.8 bar)  |

### Performance

|                               |                   |
|-------------------------------|-------------------|
| Maximum Operating Temperature | 240°F (115°C)     |
| Maximum Working Pressure      | 300 PSIG (12 bar) |
| Warranty                      | 3-Years           |

### Application

- For use in closed, non-potable hydronic heating and chilled water systems.
- Designed to meet all ASME Code Section VIII, Division 1 standards.
- Available with optional sight glass and seismic restraints (saddles).
- Suitable in propylene glycol applications with mixtures up to 50%.



### Horizontal ASME Models

| Model Number | Tank Volume |       | Max. Accept. Volume |       | A Tank Diameter |     | B Tank Length |      | Sys. Conn       | Restraints (Saddles) for Horizontal Mounting |      |    |     |    |     | Ship Wt. with Restraints (Saddles) |     | Shipping Weight |     |
|--------------|-------------|-------|---------------------|-------|-----------------|-----|---------------|------|-----------------|--|------|----|-----|----|-----|------------------------------------|-----|-----------------|-----|
|              |             |       |                     |       |                 |     |               |      |                 | F  |      | G  |     | H  |     |                                    |     |                 |     |
|              | Gal         | Lit   | Gal                 | Lit   | In              | mm  | In            | mm   | In              | mm   | In   | mm | In  | mm | Lbs | Kg                                 | Lbs | Kg              |     |
| AX-15        | 8.0         | 30.3  | 2.4                 | 9.1   | 12              | 305 | 19            | 489  | ½ <sup>1</sup>  | 14¾  | 365  | 10 | 254 | 8  | 203 | 65                                 | 29  | 59              | 27  |
| AX-20        | 10.9        | 41.3  | 2.4                 | 9.1   | 12              | 305 | 26            | 607  | ½ <sup>1</sup>  | 21⅞  | 537  | 10 | 254 | 8  | 203 | 80                                 | 36  | 74              | 34  |
| AX-40        | 21.7        | 82.2  | 11.3                | 42.8  | 16              | 356 | 29            | 737  | ½ <sup>1</sup>  | 22   | 557  | 14 | 356 | 12 | 305 | 134                                | 61  | 118             | 54  |
| AX-60        | 33.6        | 127.2 | 11.3                | 42.8  | 16              | 356 | 43            | 1073 | ½ <sup>1</sup>  | 36⅞  | 918  | 14 | 356 | 12 | 305 | 170                                | 77  | 154             | 70  |
| AX-80        | 44.4        | 168.1 | 22.6                | 85.5  | 24              | 610 | 29            | 725  | 1 <sup>1</sup>  | 16⅞  | 429  | 20 | 508 | 18 | 457 | 265                                | 120 | 245             | 111 |
| AX-100       | 55.7        | 211.8 | 22.6                | 85.5  | 24              | 610 | 33            | 840  | 1 <sup>1</sup>  | 21½  | 546  | 20 | 508 | 18 | 457 | 299                                | 136 | 279             | 127 |
| AX-120       | 68.0        | 257.4 | 34.0                | 128.7 | 24              | 610 | 41            | 1051 | 1 <sup>1</sup>  | 29½  | 749  | 20 | 508 | 18 | 457 | 347                                | 157 | 327             | 148 |
| AX-144       | 77.0        | 291.5 | 34.0                | 128.7 | 24              | 610 | 46            | 1170 | 1 <sup>1</sup>  | 34¾  | 873  | 20 | 508 | 18 | 457 | 370                                | 168 | 350             | 159 |
| AX-180       | 90.0        | 340.7 | 34.0                | 128.7 | 24              | 610 | 54            | 1357 | 1 <sup>1</sup>  | 41¼  | 1060 | 20 | 508 | 18 | 457 | 392                                | 178 | 372             | 169 |
| AX-200       | 110.0       | 416.4 | 34.0                | 128.7 | 24              | 610 | 64            | 1624 | 1 <sup>1</sup>  | 52¼  | 1327 | 20 | 508 | 18 | 457 | 450                                | 204 | 430             | 195 |
| AX-240       | 132.0       | 500.0 | 46.0                | 174.0 | 30              | 762 | 51            | 1295 | 1 <sup>1</sup>  | 35   | 889  | 24 | 610 | 22 | 559 | 667                                | 303 | 642             | 291 |
| AX-260       | 159.0       | 600.0 | 56.0                | 212.0 | 30              | 762 | 62            | 1581 | 1¼ <sup>2</sup> | 44¼  | 1124 | 24 | 610 | 22 | 559 | 753                                | 342 | 728             | 330 |
| AX-280       | 211.0       | 800.0 | 84.0                | 318.0 | 30              | 762 | 80            | 2032 | 1¼ <sup>2</sup> | 62   | 1575 | 24 | 610 | 22 | 559 | 755                                | 433 | 930             | 422 |

All dimensions and weights are approximate.

|                  |             |
|------------------|-------------|
| Job Name _____   | Notes _____ |
| Engineer _____   | _____       |
| Contractor _____ | _____       |
| P.O. No. _____   | _____       |
| Sales Rep. _____ | _____       |
| Model No. _____  | _____       |

