



AIR SEPARATOR

Tangential Air Separators: 2" - 24" with Strainer ASME

125 PSIG Working Pressure

Construction

| | |
|--------------------|---------------------|
| Body | ASME Approved Steel |
| Flanges | ASME Class 150 |
| Removable Strainer | 304 Stainless Steel |

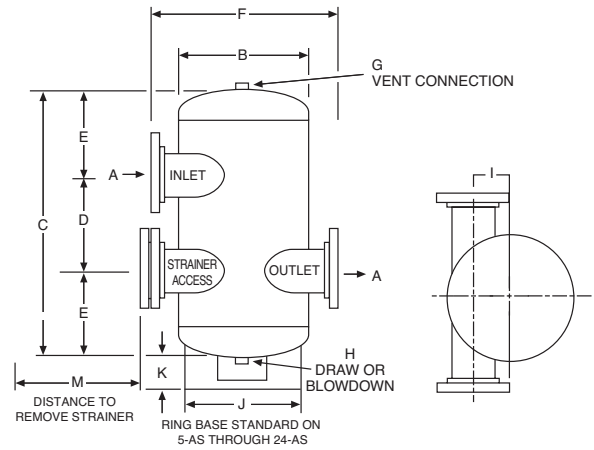
Performance

| | |
|-------------------------------|--------------------|
| Maximum Operating Temperature | 350°F (176.7°C) |
| Maximum Working Pressure | 125 PSIG (8.6 bar) |
| Warranty | 3-Years |

Application

- Creates a low velocity vortex that separates and removes entrained air from circulating water or anti-freeze.

- For use in closed, non-potable water systems.
- Designed and constructed per ASME Code Section VIII, Division 1.



ASME Models

| Model Number | Dimensions | | | | | | | | | | | | Sq In | Shipping Weight | | Clearance to Remove Strainer |
|--------------|------------|----|-----|----|-----|----|----|----|----|-----|-----|-----|---------------------------|-----------------|------|------------------------------|
| | A | B | C | D | E | F | G | H | I | J | K | M | Strainer Screen Free Area | Lbs | Kg | In |
| | In | In | In | In | In | In | In | In | In | In | In | In | | | | |
| 2-AS | 2 | 10 | 23 | 8 | 7½ | 17 | ¾ | ¾ | 3 | - | - | 14 | 33 | 45 | 20 | 12 |
| 2½-AS | 2½ | 10 | 23 | 8 | 7½ | 17 | ¾ | ¾ | 3 | - | - | 14 | 40 | 54 | 24 | 13 |
| 3-AS | 3 | 10 | 23 | 8 | 7½ | 17 | ¾ | ¾ | 3 | - | - | 14 | 45 | 60 | 27 | 15 |
| 4-AS | 4 | 12 | 25 | 10 | 7½ | 21 | ¾ | ¾ | 3½ | - | - | 16½ | 78 | 70 | 32 | 17 |
| 5-AS | 5 | 16 | 34½ | 12 | 11¼ | 24 | ¾ | ¾ | 4¼ | 12¾ | 4⅝ | 21½ | 120 | 200 | 91 | 22 |
| 6-AS | 6 | 18 | 39 | 14 | 12½ | 26 | ¾ | ¾ | 4¼ | 14 | 4⅝ | 23 | 186 | 249 | 113 | 24 |
| 8-AS | 8 | 24 | 52 | 18 | 17 | 32 | ¾ | ¾ | 5¼ | 16 | 4⅝ | 29 | 313 | 375 | 170 | 30 |
| 10-AS | 10 | 30 | 59½ | 22 | 18¾ | 40 | ¾ | ¾ | 7¼ | 24 | 4⅝ | 35 | 491 | 750 | 340 | 36 |
| 12-AS | 12 | 36 | 70 | 26 | 22 | 46 | ¾ | ¾ | 7¼ | 30 | 12⅝ | 40 | 644 | 950 | 431 | 45 |
| 14-AS | 14 | 42 | 87 | 30 | 28½ | 56 | ¾ | ¾ | 13 | 30 | 13⅜ | 48 | 810 | 2200 | 998 | 49 |
| 16-AS | 16 | 48 | 90 | 32 | 29 | 64 | 3 | 3 | 15 | 42 | 12½ | 56 | 969 | 3000 | 1361 | 59 |
| 18-AS | 18 | 54 | 102 | 36 | 33 | 64 | 3 | 3 | 16 | 42 | 12⅝ | 62 | 1517 | 3500 | 1588 | 62 |
| 20-AS | 20 | 60 | 100 | 30 | 35 | 70 | 3 | 3 | 19 | 45 | 6⅝ | 68 | 1860 | 5000 | 2268 | 70 |
| 22-AS | 22 | 60 | 119 | 48 | 35½ | 70 | 3 | 3 | 18 | 45 | 7 | 68 | 2073 | 5500 | 2495 | 74 |
| 24-AS | 24 | 72 | 136 | 43 | 46½ | 82 | 3 | 3 | 22 | 45 | 8 | 80 | 2712 | 7000 | 3175 | 80 |

All dimensions and weights are approximate.

| | |
|------------------|-------------|
| Job Name _____ | Notes _____ |
| Engineer _____ | _____ |
| Contractor _____ | _____ |
| P.O. No. _____ | _____ |
| Sales Rep. _____ | _____ |
| Model No. _____ | _____ |

