



AIR SEPARATOR

Tangential Air Separators: 2" - 24" without Strainer ASME

300 PSIG Working Pressure

Construction

Body	ASME Approved Steel
Flanges	ASME Class 300

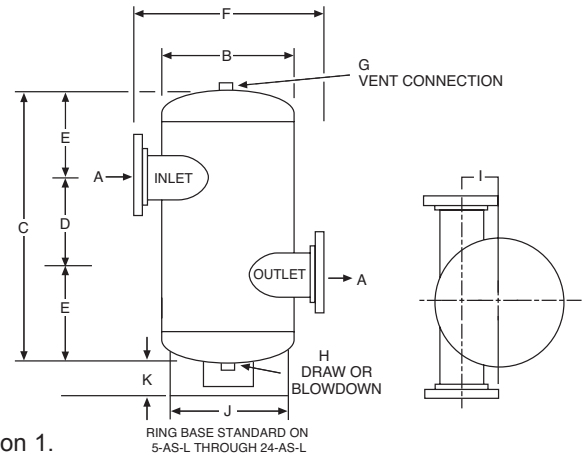
Performance

Maximum Operating Temperature	350°F (176.7°C)
Maximum Working Pressure	300 PSIG (20.7 bar)
Warranty	3-Years

Application

- Creates a low velocity vortex that separates and removes entrained water or anti-freeze from circulating water or anti-freeze.

- For use in closed, non-potable water systems.
- Designed and constructed per ASME Code Section VIII, Division 1.



ASME Models

Model Number	Dimensions											Shipping Weight	
	A	B	C	D	E	F	G	H	I	J	K	Lbs	Kg
	In	In	In	In	In	In	In	In	In	In	In		
2-ASL	2	10	23	8	7½	17	¾	¾	3	-	-	74	34
2½-ASL	2½	10	23	8	7½	17	¾	¾	3	-	-	90	41
3-ASL	3	10	23	8	7½	17	¾	¾	3	-	-	100	45
4-ASL	4	12	25	10	7½	21	¾	¾	3½	-	-	118	54
5-ASL	5	16	34½	12	11¼	24	¾	¾	4¼	12¾	4⅝	315	143
6-ASL	6	18	41	14	13½	26	¾	¾	4¼	14	4⅝	400	181
8-ASL	8	24	52	18	17	32	¾	¾	5¾	16	4⅝	630	286
10-ASL	10	30	58	21	18½	40	¾	¾	7¾	24	4⅝	1260	572
12-ASL	12	36	68	26	21	46	¾	¾	7¾	30	12⅝	1640	744
14-ASL	14	42	87	30	28½	56	¾	¾	13	30	13⅝	3335	1513
16-ASL	16	48	90	32	29	64	3	3	15	42	12½	4700	2132
18-ASL	18	54	102	36	33	64	3	3	16	42	12⅝	5400	2450
20-ASL	20	60	100	30	35	70	3	3	19	45	6⅞	8200	3719
22-ASL	22	60	119	48	35½	70	3	3	18	45	7	9575	4343
24-ASL	24	72	131	43	44	82	3	3	22	45	8	11000	4990

All dimensions and weights are approximate.

Job Name _____	Notes _____
Engineer _____	_____
Contractor _____	_____
P.O. No. _____	_____
Sales Rep. _____	_____
Model No. _____	_____

